

Heat Transfer
solutions

Spirax EasiHeat™ HTG

Incorporating **SIMS**
TECHNOLOGY



First for Steam Solutions

EXPERTISE | SOLUTIONS | SUSTAINABILITY

spirax
sarco

Spirax EasiHeatTM HTG

Incorporating SIMS Technology

Meet the Challenge of Managing Your Energy Costs

Of all the costs your organization is able to control, your energy bill is amongst the most significant. Which is why, with fuel prices on the rise, it is more important than ever to improve the energy performance of your plant.

Our Spirax EasiHeatTM HTG incorporating SIMS technology (see page 6) is a complete, compact and ready-to-use steam to water heat transfer package that delivers superior energy efficient performance. For standard closed heating circuit applications, the Spirax EasiHeatTM HTG can help you lower costs, tackle waste, mitigate your environmental impact and make a positive change towards a more sustainable future.

For more accurate and reliable monitoring and measuring of your heating systems, the Spirax EasiHeatTM HTG features our innovative control system with integrated SIMS technology. Its 7" color touch screen control provides complete and easy access to the data required to understand how and where you use your energy, enabling informed energy management decisions and increased efficiency.



First for Steam Solutions

Key Features

Key Benefits



Advanced Controls

Outside weather compensation further increases energy efficiency.
 Programmable timer ensures you only use energy to heat your building during the times it is required.



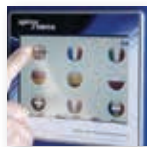
No Waste Design

Optimized design for low energy consumption and efficient use of steam.



Compact Design

Reduced radiated energy losses.
 Fits through standard doorway.
 Saves floor space.



Touch Screen Control

Ease of use.
 Clear visual access to all system parameters.
 Optional access to energy consumption data.



Unique Spirax Intelligent Control

Intelligent control, increasing energy efficiency.
 Low cost of ownership.



Pre-Assembled, Tested Unit

High quality low maintenance components.
 Minimal installation time.
 Trouble free commissioning.
 Single source of supply.



Communications

Easy integration with on-site building management systems.
 E-mail and SMS messaging of system performance and alarms reducing maintenance.
 Remote access to control unit by the Internet.



First for Steam Solutions

The More Energy Efficient Alternative

The Spirax EasiHeat™ incorporating SIMS technology offers you an extremely compact and energy efficient heat transfer solution. Because all of the useful energy in the steam is used in the unit, there's less waste than other available alternatives which, in turn, reduces both fuel demand and your CO₂ emissions.

Benefits:

- Energy efficient - helps lower costs and CO₂ emissions.
- All of the components precisely sized to provide optimum performance from the unit.
- Maximum output for minimum footprint. The core unit only occupies 13 ft² with even the largest output unit, fitted with all available options, only taking up 19 ft² to save floor space in the plant room.
- Lower cost of ownership. High quality low maintenance components reduce maintenance costs. The Spirax EasiHeat™ HTG seldom requires an annual insurance inspection due to the very low volume of the heat exchanger.
- Quicker, easier installation. The Spirax EasiHeat™ HTG is supplied as a preconfigured, tested, pre-assembled, skid mounted unit. Offsite fabrication reduces installation time and helps with speedy, trouble-free commissioning.
- SIMS technology - Intelligent control logic that allows you to interrogate energy, CO₂ and carbon data to help you improve efficiency.
- Spirax EasiHeat™ HTG is accurately selected for your current needs at the time it is installed, but can be adapted to suit future expansion by adding further plates to the heat exchanger.

Introducing SIMS Technology – The Innovative New Spirax Intelligent Monitoring System

The Spirax EasiHeat™ HTG comes complete with an innovative control system incorporating SIMS technology. This Spirax Sarco technology enables monitoring, diagnostics and communications across steam plant and packaged systems. The technology delivers meaningful energy management and system performance data to the user allowing the optimization of the steam system and subsequent efficiency improvements. The information can be accessed a number of ways; remotely over the internet, through improved compatibility with existing onsite communication systems, or via mobile devices through SMS text messaging, e-mail and smart phone applications.

- 7" color, intuitive touch screen control with advanced graphics as standard.
- Complete visual access to all key parameters. Easy to interrogate and obtain the required data, such as energy consumption and CO₂ emissions.
- Easy to operate, with SIMS technology a package can be operated with limited previous controls and instrumentation experience.
- Advanced communications to help you access and control the overall efficiency of your Spirax EasiHeat™ HTG from any location. SIMS technology is compatible for connection to existing proprietary networks and can interact with systems including Ethernet, Modbus and Profibus. To meet the growing demand for increased connectivity within building and energy management systems, it has also been developed with BACnet capability.
- Optional web server allows secure remote access to monitor and control the unit through a standard web browser. It provides access 24 hours a day, 7 days a week, globally, via the Internet. You can even interrogate historical trends or diagnose faults without stepping into the plant room.
- SIMS technology automatically generates text or e-mail alerts if an event occurs, allowing you to manage alarm notifications and will alert you when a routine service is due, speeding up service and repairs.

Data at a glance - control at your fingertips.

SIMS
TECHNOLOGY



spirax sarco
EasiHeat
Model Type
Product Code Number
Date of

Advanced Heating Controls Delivered with SIMS Technology

The Spirax EasiHeat™ HTG incorporating SIMS technology features a 7-day programmable time clock, like the one found on the central heating systems in most homes. The Spirax EasiHeat™ HTG is already efficient, but this feature can save you even more energy by only having your heating system on when you need it.



Outside weather compensation automatically adjusts the heating set point, so if the outside temperature rises the Spirax EasiHeat™ HTG will automatically lower its temperature output.

This advanced control method further improves energy efficiency and maintains a comfortable working environment.



As the outside weather temperature increases the temperature in the heating system is reduced, increasing system efficiency.



As the outside weather temperature reduces the temperature in the heating system is increased.

First for Steam Solutions

Nottingham, UK

case study



Spirax Easiheat™ Htg Systems Oust Outsized Competitors

For the consulting contractor, converting a single-story office building into laboratories meant the installation of a new heating and hot water system was space critical. This was the first consideration in changing the original specifications, initially utilizing standard shell & tube heat exchangers.

Spirax Sarco advised the contractor that the proposed heat exchangers were oversized given space was at a premium, that efficiency could be improved, and subsequently recommended the Spirax EasiHeat™ HTG system.

Compared with the shell & tube heat exchangers originally specified to perform the same duties, the two Spirax EasiHeat™ HTG systems occupied just 25% of the original floor space. The two units were fitted in half the time it would take a standard shell & tube heat exchanger, because a lot of the commissioning work, such as setting and testing the controls, could be carried out off-site before they arrived.

By using Spirax Sarco's Spirax EasiHeat™ HTG to provide hot water and heating, our customer saved precious plant room space and reduced installation time during a major refurbishment project.



A Complete Spirax EasiHeat™ HTG System

The Standard Unit

The standard unit contains all the key components that contribute to the unmatched performance of the Spirax EasiHeat™ HTG.

Fail-Safe High Limit Option

High limit temperature control should always be specified to ensure the heater will automatically and safely shut down should a problem occur. The Spirax EasiHeat™ HTG can be specified with a, fail-safe high limit.

Pipeline Ancillaries Option

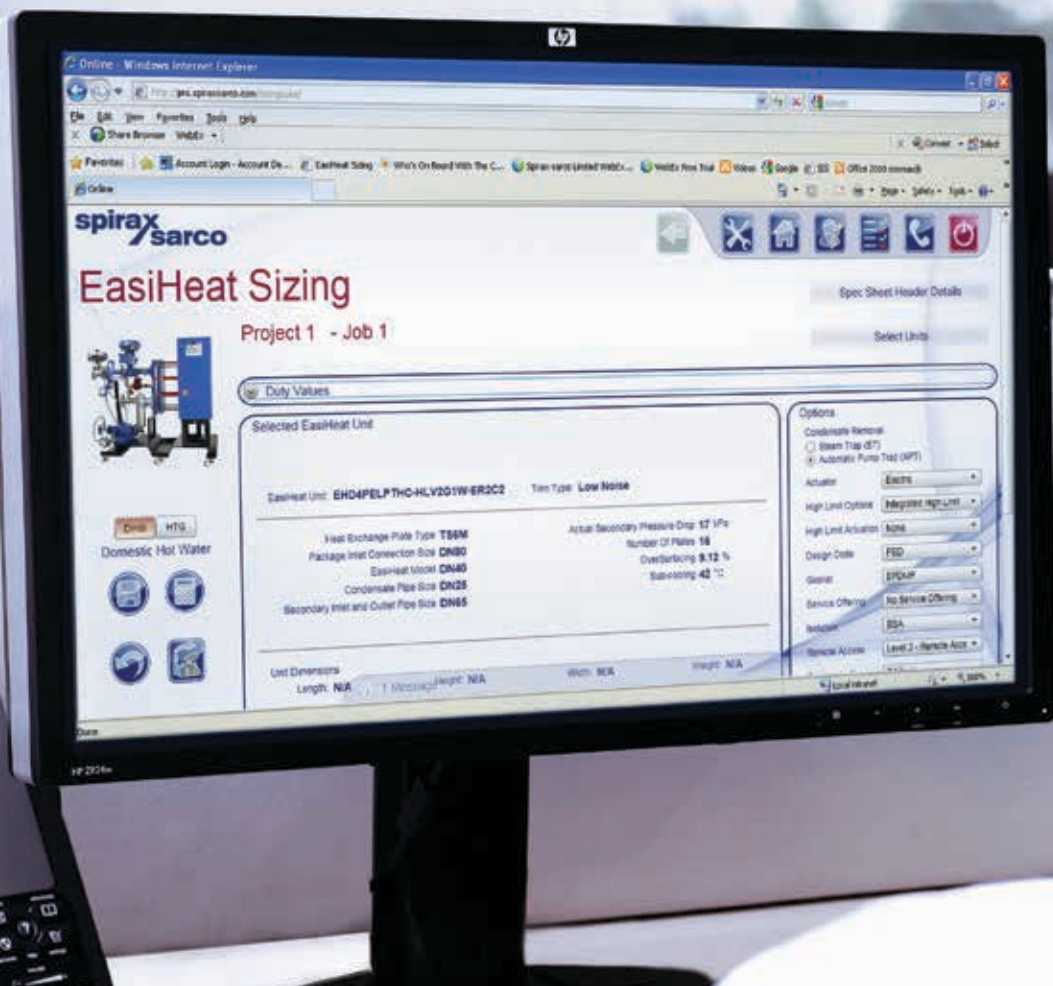
The Spirax EasiHeat™ HTG can be provided with a range of pipeline ancillary equipment to suit your requirements.

SIMS Technology Options

The energy monitoring option allows interrogation of energy, CO₂ and carbon data. There are a number of remote access options including text message and e-mail of system alarms and full remote access via the Internet. A wide number of communication protocol options provides the Spirax EasiHeat™ HTG with the flexibility to integrate with many existing communication and building management systems.

“ We wanted to make energy, CO₂ and carbon information **readily available** to the customer. With SIMS technology, energy managers have access to key information to produce their reports **simply and quickly.**”

Chris Rowlands,
Group Product Manager for Heat Transfer Solutions



Contact Spirax Sarco today...

For more details on how our Spirax EasiHeat™ HTG incorporating SIMS technology can help you reduce the costs of your domestic or process hot water applications.

For more information, please visit www.spiraxsarco.com/global/us



spirax sarco

Spirax Sarco, Inc.
1150 Northpoint Blvd., Blythewood, SC 29016
T 800-883-4411
www.spiraxsarco.com/global/us



SPB-P481-05-US

© Copyright 2017 Spirax Sarco is a registered trademark of Spirax-Sarco Limited